

ASAHI **AV** VALVE AND PIPING SYSTEMS

ASAHI **AV** VALVES

Diaphragm Valve Type 14 (Pneumatic Actuated Type AN) 15mm-50mm (1/2inch-2inch)



Diaphragm Valve Type 14 (Pneumatic Actuated Type AN) 15mm-50mm (1/2inch-2inch)

Body Material

PVC
C-PVC
PP
PVDF

Diaphragm Material

PTFE
EPDM
FKM
Viflon C (FKM-C)
Viflon F (FKM-F)

Connection Standard

JIS 10K
ANSI CLASS150
DIN PN10

Action

Double Acting
Air to Open
Air to Close

Equipment

Indicator

Option

- Filter Regulator
- Solenoid Valve
- Limit Switch
- Speed Controller
- Manual Override
- ※for air to open
- Positioner



FEATURES

- The Actuator made of resin is Light and Compact.
- NAMUR Standard is applied for Air Piping.
- All optional Equipment (except positioner) can easily be added or removed in the field.
- A Closing Travel Stop Mechanism is Standard.

OPTIONAL EQUIPMENT

Combination No.	1	2	3	4	5	6	7	8	9
Solenoid Valve※	○	—	—	○	○	—	○	—	—
Filter Regulator	—	—	—	—	—	—	—	—	○
Speed Controller	◎	○	—	◎	◎	○	◎	—	—
Limit Switch	—	—	○	—	○	○	○	—	—
Positioner (electric-air, ait-air)	—	—	—	—	—	—	—	○	○

◎Indicates specialized for Solenoid Valve.

※With built-in speed controller and bypass valve.

ACTUATOR SPECIFICATION [Double Acting]

Nominal Size mm(inch)	15(1/2inch)	20(3/4inch)	25(1inch)	32(1 1/4inch)	40(1 1/2inch)	50(2inch)
Actuator Type	AN-1DA		AN-2DA		AN-3DA	AN-4DA
Operating Pressure Mpa(kgf/cm ²)	0.4{4.1} - 0.6{6.1}					
Air Consumption NI /open & close (at operating pressure 0.4NPa)	2.6	2.6	2.7	2.7	9.6	9.8
Air Supply Bore	Rc 1/4					

ACTUATOR SPECIFICATION [Air to Open]

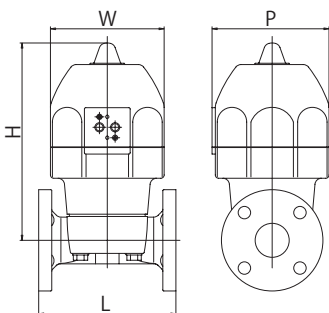
Nominal Size mm(inch)	15(1/2inch)	20(3/4inch)	25(1inch)	32(1 1/4inch)	40(1 1/2inch)	50(2inch)
Actuator Type	AN-1AO		AN-2AO		AN-3AO	AN-4AO
Operating Pressure Mpa(kgf/cm ²)	0.4{4.1} - 0.6{6.1}					
Air Consumption NI /open & close (at operating pressure 0.4NPa)	0.8	0.8	0.8	0.8	3.4	3.4
Air Supply Bore	Rc 1/4					

ACTUATOR SPECIFICATION [Air to Close]

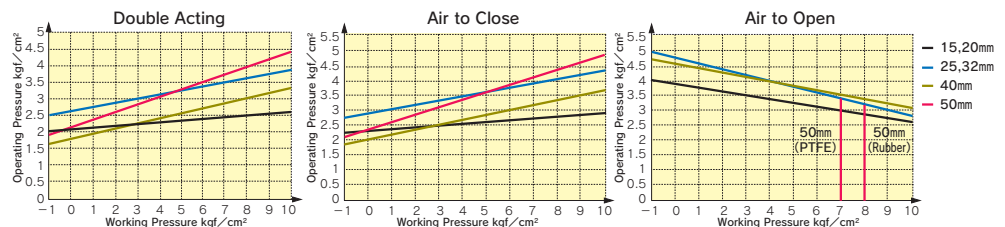
Nominal Size mm(inch)	15(1/2inch)	20(3/4inch)	25(1inch)	32(1 1/4inch)	40(1 1/2inch)	50(2inch)
Actuator Type	AN-1AS		AN-2AS		AN-3AS	AN-4AS
Operating Pressure Mpa(kgf/cm ²)	0.4{4.1} - 0.6{6.1}					
Air Consumption NI /open & close (at operating pressure 0.4NPa)	1.8	1.8	1.9	1.9	6.1	6.3
Air Supply Bore	Rc 1/4					

* for the actuator with lubricant free valves consult near Asahi dealer.

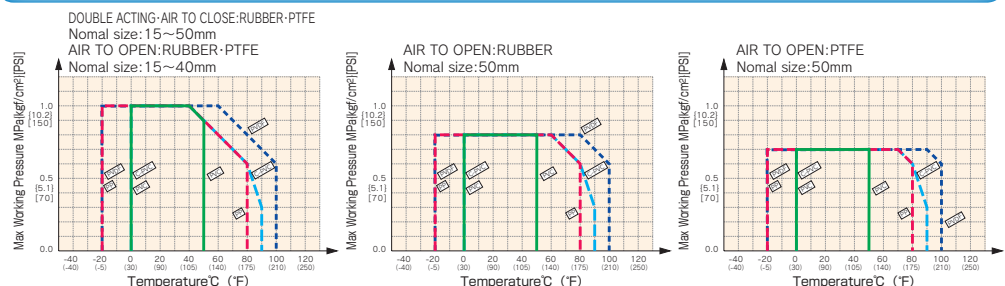
DIMENSIONS FIGURE



OPERATION PRESSURE vs WORKING PRESSURE



WORKING PRESSURE VS. TEMPERATURE



DIMENSIONS TABLE

ANSI, DIN		Unit:mm(inch)						
Nominal Size		15(1/2)	20(3/4)	25(1)	32(1 1/4)	40(1 1/2)	50(2)	
L	DIN	130 (5.12)	150 (5.91)	160 (6.30)	180 (7.09)	200 (7.87)	230 (9.06)	
	ANSI	A Standard	110 (4.33)	120 (4.72)	130 (5.12)	—	180 (7.09)	210 (8.27)
		G Standard	108 (4.25)	149 (5.88)	149 (5.88)	213 (8.38)	176 (6.94)	202 (7.94)
	H	186 (7.32)	188 (7.4)	193 (7.6)	197 (7.76)	293 (11.54)	302 (11.89)	
	W	130 (5.12)	130 (5.12)	130 (5.12)	130 (5.12)	174 (6.85)	174 (6.85)	
	P	133 (5.24)	133 (5.24)	133 (5.24)	133 (5.24)	179 (7.05)	179 (7.05)	



True Union Diaphragm Valve Type 14 (Pneumatic Actuated Type AN) 15mm-50mm (1/2 inch-2 inch)

Body Material

PVC
C-PVC
PP
PVDF

Diaphragm Material

PTFE
EPDM
FKM
Viflon C (FKM-C)
Viflon F (FKM-F)

Connection Standard

Socket End JIS
Socket End ASTM SCH80
Socket End DIN
Threaded End Rc
Threaded End NPT
Threaded End Rp

Action

Double Acting
Air to Open
Air to Close

Equipment

Indicator

Option

- Filter Regulator
- Solenoid Valve
- Limit Switch
- Speed Controller
- Manual Override
- ※for air to open
- Positioner



FEATURES

- The Actuator made of Resin is Light and Compact.
- NAMUR Standard is applied for air piping.
- All Optional Equipment(except positioner) can easily be added or removed in the Field.
- A Closing Travel Stop mechanism is standard.

OPTIONAL EQUIPMENT

Combination No.	1	2	3	4	5	6	7	8	9
Solenoid Valve※	○	—	—	○	○	—	○	—	—
Filter Regulator	—	—	—	○	—	—	○	—	○
Speed Controller	◎	○	—	◎	◎	○	◎	—	—
Limit Switch	—	—	○	—	○	○	○	—	—
Positioner (Electric-Air, Air-Air)	—	—	—	—	—	—	—	○	○

◎Indicates specialized for Solenoid Valve.
※With built-in speed controller and bypass valve.

ACTUATOR SPECIFICATION [Double Acting]

Nominal Size mm(inch)	15(1/2inch)	20(3/4inch)	25(1inch)	32(1 1/4inch)	40(1 1/2inch)	50(2inch)
Actuator Type	AN-1DA		AN-2DA		AN-3DA	AN-4DA
Operating Pressure Mpa(kgf/cm ²)	0.4(4.1) - 0.6(6.1)					
Air Consumption NI /Open & Close (at operating pressure 0.4NPa)	2.6	2.6	2.7	2.7	9.6	9.8
Air Supply Bore	Rc 1/4					

ACTUATOR SPECIFICATION [Air to Open]

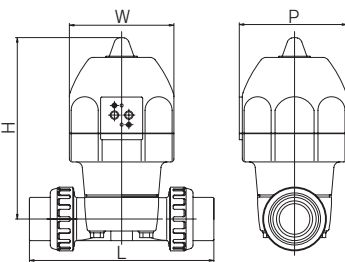
Nominal Size mm(inch)	15(1/2inch)	20(3/4inch)	25(1inch)	32(1 1/4inch)	40(1 1/2inch)	50(2inch)
Actuator Type	AN-1AO		AN-2AO		AN-3AO	AN-4AO
Operating Pressure Mpa(kgf/cm ²)	0.4(4.1) - 0.6(6.1)					
Air Consumption NI /Open & Close (at operating pressure 0.4NPa)	0.8	0.8	0.8	0.8	3.4	3.4
Air Supply Bore	Rc 1/4					

ACTUATOR SPECIFICATION [Air to Close]

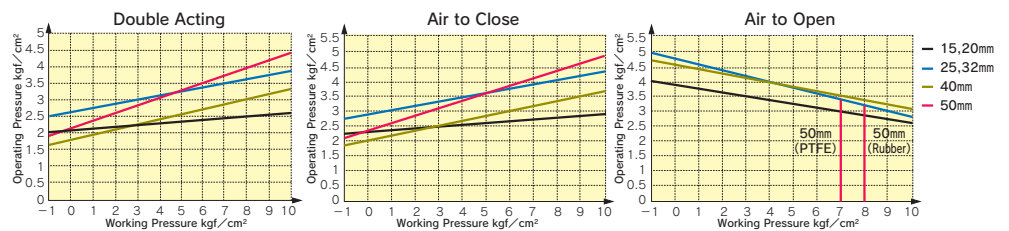
Nominal Size mm(inch)	15(1/2inch)	20(3/4inch)	25(1inch)	32(1 1/4inch)	40(1 1/2inch)	50(2inch)
Actuator Type	AN-1AS		AN-2AS		AN-3AS	AN-4AS
Operating Pressure Mpa(kgf/cm ²)	0.4(4.1) - 0.6(6.1)					
Air Consumption NI /Open & Close (at operating pressure 0.4NPa)	1.8	1.8	1.9	1.9	6.1	6.3
Air Supply Bore	Rc 1/4					

* for the actuator with lubricant free valves consult near Asahi dealer.

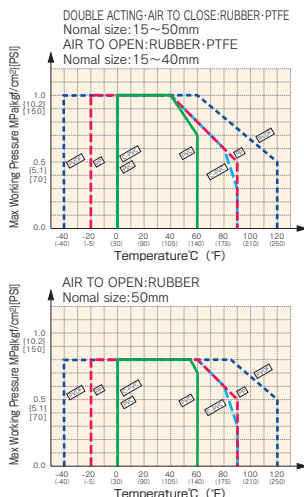
DIMENSIONS FIGURE



OPERATION PRESSURE vs WORKING PRESSURE

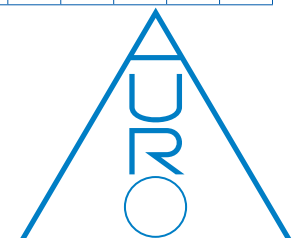


WORKING PRESSURE vs. TEMPERATURE



DIMENSIONS TABLE

ANSI, DIN							Unit:mm(inch)											
Nominal Size		15(1/2)	20(3/4)	25(1)	32(1 1/4)	40(1 1/2)	50(2)	Nominal Size		15(1/2)	20(3/4)	25(1)	32(1 1/4)	40(1 1/2)	50(2)			
Threaded End	L	PVC, C-PVC	DIN	128 (5.04)	148 (5.83)	172 (6.77)	188 (7.4)	245 (9.65)	281 (11.06)	Socket End	PP	DIN	125 (4.92)	141 (5.55)	164 (6.46)	177 (6.97)	231 (9.09)	274 (10.79)
			ANSI	128 (5.04)	148 (5.83)	172 (6.77)	188 (7.4)	245 (9.65)	281 (11.06)			ANSI	138 (5.43)	155 (6.09)	184 (7.24)	198 (7.80)	261 (10.28)	293 (11.54)
	P	PP, PVDF	DIN	128 (5.04)	148 (5.83)	172 (6.77)	188 (7.4)	245 (9.65)	278 (10.95)	Common	PVDF	ANSI	138 (5.43)	155 (6.09)	184 (7.24)	198 (7.80)	261 (10.28)	293 (11.54)
			ANSI	128 (5.04)	148 (5.83)	172 (6.77)	188 (7.4)	245 (9.65)	278 (10.95)			H	186 (7.32)	188 (7.4)	193 (7.6)	197 (7.76)	293 (11.54)	302 (11.89)
Socket End	L	PVC, C-PVC	DIN	128 (5.04)	147 (5.79)	172 (6.77)	188 (7.4)	246 (9.69)	294 (11.57)	Common	W	DIN	130 (5.12)	130 (5.12)	130 (5.12)	130 (5.12)	174 (6.85)	174 (6.85)
			ANSI	139 (5.47)	157 (6.18)	186 (7.32)	202 (7.95)	266 (10.47)	293 (11.54)			P	133 (5.24)	133 (5.24)	133 (5.24)	133 (5.24)	179 (7.05)	179 (7.05)
	P	PP, PVDF	DIN	128 (5.04)	148 (5.83)	172 (6.77)	188 (7.4)	245 (9.65)	278 (10.95)	Common	P	ANSI	138 (5.43)	155 (6.09)	184 (7.24)	198 (7.80)	261 (10.28)	293 (11.54)
			ANSI	128 (5.04)	148 (5.83)	172 (6.77)	188 (7.4)	245 (9.65)	278 (10.95)			H	186 (7.32)	188 (7.4)	193 (7.6)	197 (7.76)	293 (11.54)	302 (11.89)



AURO LOCATIONS

AURO Armaturen- und RohrhandelsgesmbH
Lichtblaustraße 21
A-1220 Wien
Austria
Tel: +43/1/2565555
Fax: +43/1/256555555
E-Mail: wien@auro.cc

AURO Bulgaria EOOD
Illianci
3, Azalia Str.
BG-Sofia 1271
Bulgaria
Tel: +359/2/4894519
Fax: +359/2/4894722
E-Mail: bulgaria@auro.cc

AURO spol s.r.o
Technická 2/539
CZ-66448 Moravany u Brna
Czech Republic
Tel: +420/54/5233328
Fax: +420/54/5234753
E-Mail: auro@auro.cz

SC AURO Romania SRL
25-27, Celofibrei Str.
RO-077025 Bragadiru
Judetul Ilfov
Romania
Tel: +40/21/4205217
Fax: +40/21/4205218
E-Mail: romania@auro.cc

AURO Budapest Kft.
Gyár u. 2
H-2040 Budaörs
Hungaria
Tel: +36/23/503920
Fax: +36/23/503921
E-Mail: aurobp@aurobp.hu